

MAR 79 SPLIT EcoX

Modular Ice Machine up to 540 kg

Item #:
Project:
Quantity:



FEATURES

- Scale ice machine, in split system" version; built-in unit. Storage bin not supplied, to be purchased separately.
- To be connected to condensing unit or central cooling system (low temperature).
- AISI304 Stainless steel evaporator and ice scraper blade. Redesigned evaporator compartment end-walls.
- Foodgrade ABS plastic water sump tray, easy remove for cleaning and sanitising.
- Electromechanical control panel. Electrical protections, rotation speed & reverse phase controls.
- Low- water sensor protection. Storage bin thermostatic ice level sensor. Drive motor / gear reducer with V-Belt drive.
- Stainless steel panels in scotch-brite finish, with rounded corners, easy to remove for maintenance.
- Supplied w/ Electronic Expansion valve, Solenoid valve, pressure regulating valve (KVR), Liquid Line Safety Valve 60bar, Suction Line Safety Valve 30bar, heat exchanger.



MAR 79 SPLIT
Scale ice
Residual water content 2%
Thickness 1 or 2 mm

CONDENSING SYSTEM

SPLIT

REFRIGERANT GAS

R744

VOLTAGE V/Hz/ph

400/50/3N

RECOMMENDED BINS

Head	Bins		kg
	Bin Code	Weight	
MAR 79 SPLIT	● UBH1100	553	
	● UBH1600	812	
	● UBH2250	1068	
	● SIS300	137 + 73	
	● SIS700	318 + 73	
	● SIS1350	613 + 73 + 73	

LEGEND:

- ✓ : Perfect combination between ice maker and bin
- : Ice chute cut-out performed upon installation
- CBTxxxxxxxx : need additional bin top

Certifications:



OPERATING REQUIREMENTS

	Minimum	Maximum
Air temperature	10°C	43°C
Water temperature	5°C	38°C
Water pressure	1 bar (14 psi)	5 bar (70 psi)
Electrical voltage	-10%	+10%

IMPORTANT NOTICE:
Models and specifications are subject to change without notice. This spec sheet is meant for commercial purpose only. For technical documentation please refer to our service manuals.

Download our free **App Scotsman Ice**
Apple store
Google play
Windows store



www.scotsman-ice.it
www.scotsman-ice.com

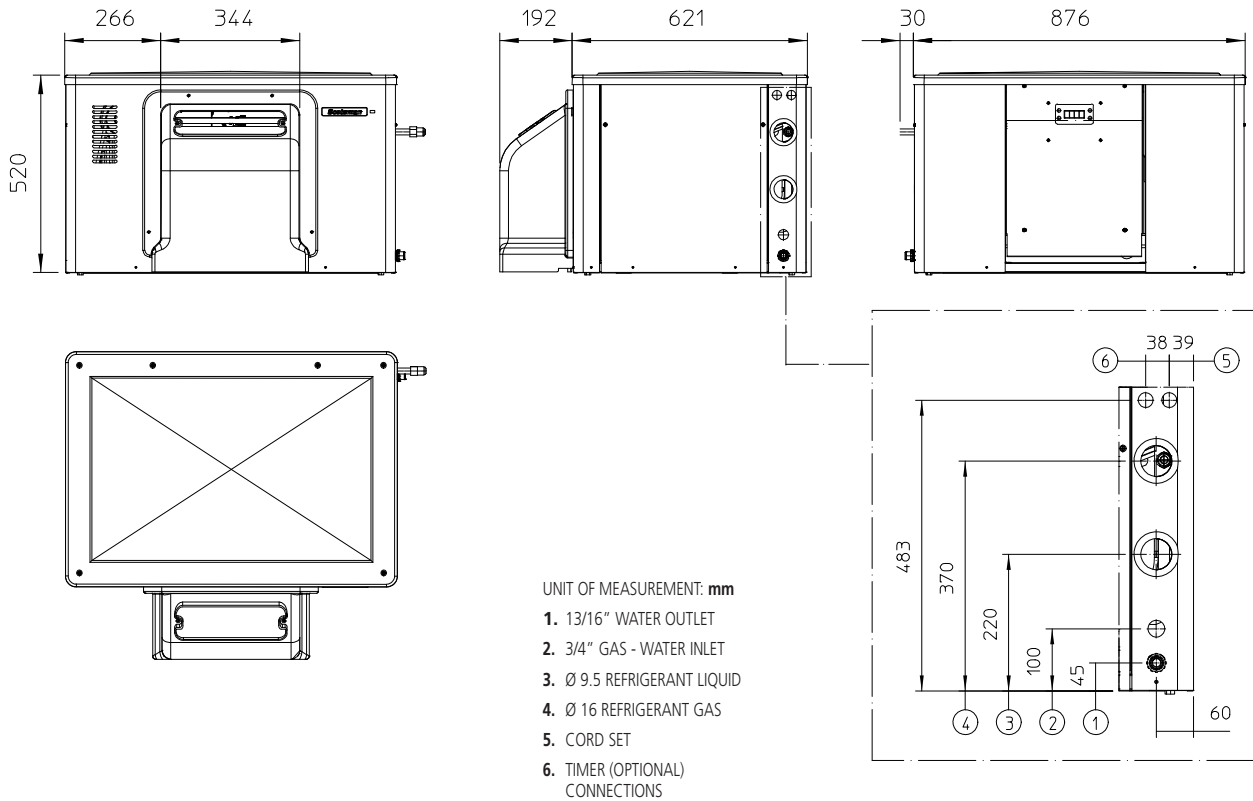
Modular Ice Machine up to 540 kg

MAR 79 SPLIT EcoX

Modular Ice Machine up to 540 kg

Item #:
Project:
Quantity:

Modular Ice Machine up to 540 kg



UNIT DATA			Cooling Requirements (Te -24°C ; Tc +10.0°C)				Circuit wires		Max. fuse size			
Version	Voltage		Btu/h	W	No.	Ømm²	A					
MAR 79 SPLIT	400/50/3N		9554	2800	5	2.0	10					
SHIPPING DATA			24 h ice production kg °C Amb. / °C Water				Energy consumption (*)	Water usage(*)	Instant power			
Size (W x D x H)	906 x 636 x 520 mm		10°C/10°C		21°C/10°C		32°C/21°C		kWh/100 kg	kWh/24h	l/h	W
Net weight	95 kg		1 mm	2 mm	1 mm	2 mm	1 mm	2 mm				
Carton (W x D x H)	980 x 740 x 680 mm		540	486	540	486	380	342	1.5	4.8	15.0	200
Weight	112 kg		(*) Data refer to 32°C Amb. / 21°C Water temperature conditions									